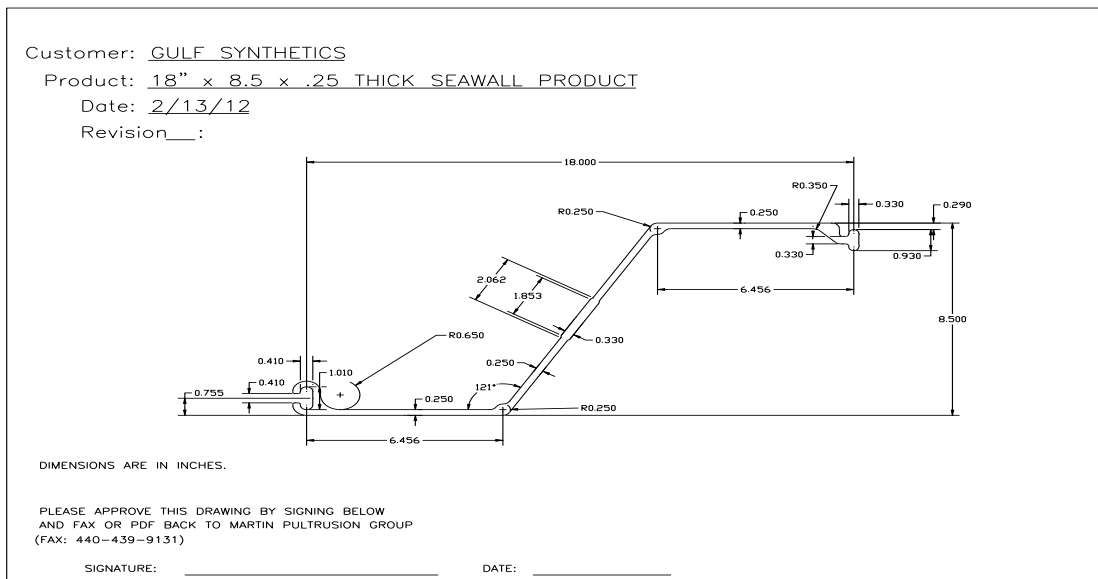


PURLocTM
 Composite Sheet Pile System

www.gulfsyntheticseawall.com 678-234-7584

Properties	Units	PURLoc Composite Sheet Pile System	Test Method
Allowable Moment	ft-lbs/ft	43,792	
Recommended Moment	ft-lbs/ft	14,597	
Modulus of Elasticity-Longitudanal Direction	x10 ⁶ psi	6.9	ASTM D638
Modulus of Elasticity-Transverse Direction	x10 ⁶ psi	2.5	ASTM D638
Moment of Inertia	in ⁴ /ft	52	
Section Modulus	in ³ /ft	13	
Width	inches	18	
Depth of Section	inches	8	
Web Thickness	inches	0.25	
Flange Thickness	inches	0.4	
Weight	lbs/ft	6.1	
Standard Color		Light Gray	
Structural Rib		Yes	
Reinforced Corner		Yes	
Material	Fiberglass Reinforced PUR Composite		
Resin	Baydur PUL 2500 from Bayer Material Sciences		



No warranty of any kind is made as to the suitability of Gulf Synthetics products for a particular application or the results obtained therefrom. Gulf Synthetics recommends that you consult with a local professional (qualified engineer and/or contractor) as to the suitability for your particular application. Gulf Synthetics also recommends application of ASTM D7290 for determining design values as standard operating procedure. Please contact Gulf Synthetics should assistance be required for determining these values.

